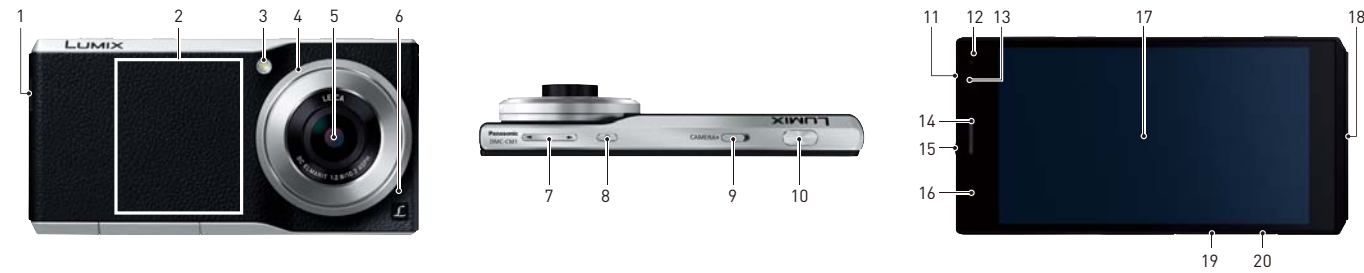


## Main Parts and Controls



- |                           |  |                           |                                     |                             |                       |
|---------------------------|--|---------------------------|-------------------------------------|-----------------------------|-----------------------|
| 1. Speaker                | 5. LEICA DC ELMARIT lens / Outward facing camera | 8. Power ON/OFF button    | 12. Ringtone lamp / Charging lamp   | 16. Inward facing camera    | 20. microSD card slot |
| 2. NFC antenna            | 6. Microphone                                    | 9. Camera selector switch | 13. Light sensor / Proximity sensor | 17. Display                 |                       |
| 3. Flash / AF Assist Lamp | 7. Volume button                                 | 10. Shutter button        | 14. Earpiece                        | 18. Mouthpiece / Microphone |                       |
| 4. Control ring           |  | 11. microUSB terminal     | 15. Earphone terminal               | 19. microSIM card slot      |                       |

## DMC-CM1 Specifications

DIMENSIONS / WEIGHT		Approx. 135.4 x 68.0 x 21.1 [Body 15.2] mm [5.33 x 2.68 x 0.83 (0.60) inch]		
Weight		Approx. 203 g without SIM Card and microSD Memory Card (0.45 lb) Approx. 204 g with SIM Card and microSD Memory Card (0.45 lb)		
IMAGE SENSOR	Camera Effective Pixels	20.1 Megapixels		
	Sensor Size / Total Pixels / Filte	1-inch High Sensitivity MOS Sensor / Total Pixel Number 20.9 Megapixels / Primary Color Filter		
LENS	Aperture	F2.8 - 11 / Multistage Iris Diaphragm		
	Optical Zoom	1x (Fixed focal length)		
	Focal Length	f = 10.2mm (31mm in 35mm equiv. in 4:3) (28mm in 35mm equiv. in 3:2) (30mm in 35mm equiv. in 16:9) (36mm in 35mm equiv. in 1:1) (43mm in 35mm equiv. in 4K video recording)		
	Extra Optical Zoom (EZ)	Picture Quality M: Max. 1.32x (4.3 / 3.2 / 1:1), Max. 1.41x (16:9) Picture Quality S: Max. 2.0x Picture Quality XS: Max. 2.83x (3.2 / 16:9), Max. 4x (4.3 / 1:1)		
	Intelligent Zoom	2x		
	Lens	LEICA DC ELMARIT 6 elements in 5 groups (3 Aspherical Lenses / 6 Aspherical Surfaces)		
	Optical Image Stabilizer	-		
	Digital Zoom	Max. 2x (When Digital Zoom is used simultaneously with Extra Optical Zoom or Intelligent Zoom, the total zoom ratio is max. 4x.)		
FOCUS	Focusing Area	10 cm - infinity		
	AF Assist Lamp	Yes (On / Off)		
	Focus	AF / MF		
	AF Metering	Face Detection / Tracking / Z3-area / 1-area		
SHUTTER	Shutter Type	Mechanical Shutter / Auto (Mechanical Shutter + Eelectronic Shutter)		
	Shutter Speed	Still Image: Mechanical Shutter: Approx. 60 - 1/2,000 sec Auto: Approx. 60 - 1/16,000 sec	Motion Picture: Approx. 1/30 - 1/16,000 sec	
	Self Timer	2 sec / 10 sec		
RECORDING SYSTEM	File Format	Still Image: JPEG [DCF/Exif2.3] *1 / RAW *2	Motion Picture: MP4	
	Image Quality	RAW / RAW+Fine / Fine / Standard		
	Recording Media	microSD Memory Card, microSDHC Memory Card, microSDXC Memory Card		
	Color Space	sRGB, AdobeRGB		
	Still Picture Recording	4:3	4864x3648 [18M] [L] / 3456x2592 [9M] [M] / 2432x1824 [4.5M] [S] / 640x480 [0.3M] [XS]	
		3:2	5472x3648 [20M] [L] / 3888x2592 [10M] [M] / 2736x1824 [5M] [S] / 1920x1280 [2.5M] [XS]	
		16:9	4728x3080 [17M] [L] / 3840x2160 [8M] [M] / 2560x1440 [3.5M] [S] / 1920x1080 [2M] [XS]	
		1:1	3648x3648 [13M] [L] / 2592x2592 [7M] [M] / 1824x1824 [3.5M] [S] / 640x640 [0.4M] [XS]	
	Recording Mode	Intelligent Auto, Intelligent Auto Plus, P, A, S, M, C1 (Custom), C2 (Custom), Scene Guide, Creative Control, Panorama Shot		
	Photo Style	Standard, Vivid, Natural, Monochrome, Scenery, Portrait		
	Picture Adjustment	Contrast, Sharpness, Noise Reduction, Saturation*, Color Tone**, * Except for Monochrome mode. ** For Monochrome mode only		
	Filter (Creative Control) [Still Image]	Expressive, Retro, Old Days, High Key, Low Key, Sepia, Monochrome, Dynamic Monochrome, Impressive Art, High Dynamic, Cross Process, Toy Effect, Toy Pop, Bleach Bypass, Miniature Effect, Fantasy, Star Filter, One Point Color [18 filters]		
Scene Guide [Still Image]	Clear Portrait / Silky Skin / Backlit Softness / Relaxing Tone / Sweet Child's Face / Distinct Scenery / Bright Blue Sky / Romantic Sunset Glow / Vivid Sunset Glow / Glistening Water / Clear Nightscape / Cool Night Sky / Warm Glowing Nightscape / Artistic Nightscape / Glittering Illuminations / Handheld Night Shot / Clear Night Portrait / Appetizing Food / Cute Dessert / Freeze Animal Motion / Clear Sports Shot / Monochrome [22 modes]			
Continuous Shooting Mode (Approx.)	SH	50 frames/sec (max. 5M, max. 23 images in JPEG) *3		
	H	10 frames/sec (max. 5 images in JPEG, max. 3 images in RAW+JPEG)		
	M	5 frames/sec (with Live View, max. 6 images in JPEG, max. 3 images in RAW+JPEG)		
	L	2 frames/sec (with Live View, max. 9 images in JPEG, max. 3 images in RAW+JPEG) (depending on memory card size, battery power, picture size, and compression)		

RECORDING SYSTEM	Motion Picture Recording **	4K Video: 3840 x 2160 pixels, 15p (4K: 50Mbps / MP4) [Sensor output is 30fps] (AAC) HD Video: 1920 x 1080 pixels, 30p (FHD: 20Mbps / MP4) [Sensor output is 30fps] (AAC) 1280 x 720 pixels, 30p (HD: 10Mbps / MP4) [Sensor output is 30fps] (AAC) STD Video: 640 x 480, 30p (VGA: 4Mbps / MP4) [Sensor output is 30fps] (AAC) 640 x 640, 30p (1:1: 4Mbps / MP4) [Sensor output is 30fps] (AAC)	
	EXPOSURE CONTROL	Exposure	Program AE, Aperture Priority AE, Shutter Priority AE, Manual
		Exposure Compensation	1/3 EV step, +/-3 EV
		Auto (AE) Bracketing	3 frames in 1/3, 2/3 or 1 EV step, Max. +/-1 EV
OUT CAMERA	Light Metering	Intelligent Multiple / Center Weighted / Spot	
	ISO Sensitivity	Auto / i.LISO / 100 [Extended ISO] / 125 / 200 / 400 / 800 / 1600 / 3200 / 6400 / 12800 / 25600 [Extended ISO] [Changeable to 1/3 EV step] [Motion picture recording: Auto]	
	WHITE BALANCE	White Balance: Auto / Daylight / Cloudy / Shade / Incandescent / White Set / Color Temperature [White Balance Adjustment]	
	FLASH	Flash (Included): Auto, Forced On, Always On, Forced Off 0.6 - 5.3m (ISO Auto)	
OTHERS	Digital Red Eye Correction (Red-Eye Removal)	Yes (On / Off)	
	Level Gauge	Yes	
IN CAMERA	Camera Effective Pixels	1.07 Megapixels	
	Picture Size	0.92 Megapixels	
FEATURES	File Format	Still Image: JPEG [Exif2.2] Motion Picture: MP4	
	OS	Android™ 4.4 (KitKat)	
	CPU	Qualcomm® Snapdragon™801 (MSM8974AB)	
	Storage & Memory	Storage 16GB *5, Memory 2GB [Up to 128GB additional with optional microSDXC Card *4]	
	SIM Size	microSIM Class B / Class C	
	Sensors	Accelerometer, Gyro, Proximity, Compass, Pressure, Luminance	
	WIRELESS	Baseband Supported Band	4G, 3G, 2G * Check the website of the Panasonic sales company in your country or region for details on the products that are available in your market.
		NFC	Yes
		Wi-Fi	Yes (IEEE 802.11a/b/g/n/ac) * Check the website of the Panasonic sales company in your country or region for details on the products that are available in your market.
		Bluetooth	Yes (Bluetooth® v4.0)
	DISPLAY	GPS	Yes (GPS, GLONASS)
		Type	TFT LCD Monitor with Static Touch Control, 16.8M Colors
Size		4.7", 16:9 aspect 1920 [W] x 1080 [H] RGB, 6,220k dots	
INTERFACE	Multi Touch	Yes	
	Microphone / Speaker	Stereo / Mono	
	microUSB	USB 2.0 [High Speed]	
LANGUAGE	Headphone Output	ø3.5mm (3-pin / 4-pin)	
	OSD Language	Japanese, English (US/UK), German, French, Spanish, Swedish, Chinese (Traditional), Chinese (Simplified), Indonesian	
POWER	Battery	Battery	Li-ion Battery Pack (3.8V, 2600mAh, 9.9Wh) [Built-in] AC Adaptor (Input: 110 - 240V AC) *7
		Battery Life (Approx.)	Still Image: 300 pictures (CIPA Standard) *8 Motion Picture *9: Continuous Recordable Time: 100 min (4K), 130 min (FHD) Actual Recordable Time: 70 min (4K), 90 min (FHD) Standby: 630 hours (3G), 560 hours (GSM) Talk: 12 hours (3G), 11 hours (GSM)
	Battery Charging Time (Approx.)	150 minutes (100% charge) [When charged with the AC Adaptor]*7 330 minutes [When charged with the USB connection cable (5.0V, 0.5A)]	
	ACCESSORIES	Standard Accessories	AC Adaptor (Quick Charge 2.0) *7, Stereo Headset (EF model only)

## A New Way to See the World



Actual Size

Communication Camera

# LUMIX CM1



\* Actual resolution: 3840 x 2160p

\*1 Based on "Exif 2.2" standard when taking pictures in Panorama Shot Mode or when recording motion picture.  
\*2 The software to process RAW file on PC is not bundled with DMC-CM1. To do this, SILKYPIX Developer Studio is available for download at Ichikawa Soft Laboratory's website using PC connected to the Internet.  
\*3 SH use Electronic shutter automatically.  
\*4 - Use a card with SD Speed Class with "Class 4" or higher when recording motion pictures.  
- Use a card with SD Speed Class with "Class 10" when recording motion pictures with [MP4] in [4K].  
[SD speed class is the speed standard regarding continuous writing].  
[The SD speed class represents the level of performance of microSD cards].  
The SD speed class does not serve as a guarantee of performance for all operations.  
- The maximum continuous recordable time of a motion picture is 29 minutes and 59 seconds, which is equivalent to a file size of approximately 4 GB.  
- Maximum time to record motion pictures continuously with [MP4] in [4K] is 10 minutes 50 seconds.  
- Maximum time to record motion pictures continuously with [MP4] in [FHD] is 26 minutes 58 seconds.  
\*5 Operation has been tested and confirmed using Panasonic SD Memory Card with a capacity of up to 2GB, Panasonic SDHC Memory Card with a capacity of up to 32GB, and Panasonic SDXC Memory Card with a capacity of up to 64GB. Operation on other SD equipment is not guaranteed.

\*6 Total usable memory will be less depending upon actual system configuration.  
\*7 The AC Adaptor is not included in the GT model.  
\*8 Recording conditions by CIPA standard  
- Temperature: 23 °C (73.4 °F) / Humidity: 50%RH when LCD monitor is ON.  
- Using a Panasonic microSDHC Memory Card  
- Starting recording 30 seconds after the camera application is turned on.  
- Recording once every 30 seconds with full flash every second recording.  
- The number of recordable pictures varies depending on the recording interval time.  
- If the recording interval time becomes longer, the number of recordable pictures decreases.  
- CIPA is an abbreviation of [Camera & Imaging Products Association].  
- If the recording interval time becomes longer, the number of recordable pictures decreases.  
- CIPA is an abbreviation of [Camera & Imaging Products Association].  
\*9 - These are standard times taken at a temperature of 23 °C (73.4 °F) and a humidity of 50%RH.  
- The time available for recording varies depending on the environment, the interval between recordings, and the manner of use.  
- The actual recordable time is the time of recording possible with repeated start/stop of the camera function, and start/stop of recording

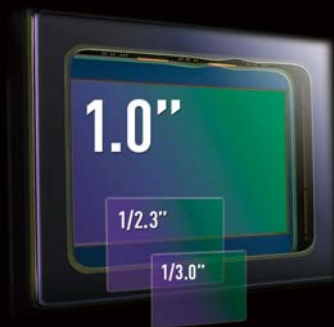


Actual photos taken by LUMIX CM1.

## The World's Slimmest\* Camera with Large Sensor

### Large, 1-inch Camera Sensor in a Pocked-sized Body

The 1-inch 20-megapixel High Sensitivity MOS sensor is larger than that on a smartphone, and usually only found in higher spec compact cameras. But because of the size, it offers outstanding low light performance with minimum noise levels — even at high ISO. The LUMIX CM1 produces crisp, highly dynamic images full of intricate details and accurately rendered soft focus.



#### Maximum ISO Sensitivity of 25600

The LUMIX CM1 has an extended ISO sensitivity of ISO25600. It also supports low ISO sensitivity of ISO100.

#### Wider Dynamic Range

The wide dynamic range offered by the LUMIX CM1 provides rich gradation to reproduce bright highlights and dark shadows with natural tones.

#### The World's Slimmest\* Body

Panasonic's downsizing and slimming technology has achieved a pocket-size body that measures about 15.2mm at the thinnest part.



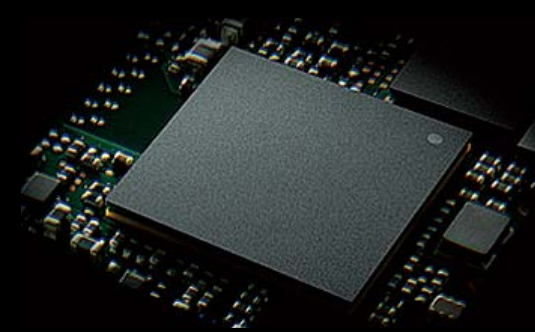
### LEICA DC Lens for Impressive Bokeh Expression

The LUMIX CM1 features a unique 28mm lens designed by Leica, one of the foremost optics manufacturers. The lens overcomes the defects typically seen in smartphone images. The lens configuration reduces image distortions such as vignettes, flaring, ghosting and chromatic inconsistencies while increasing resolution and edge-to-edge sharpness.



### Venus Engine for Detailed and Clear Pictures

The Venus Engine uses advanced image processing to offer picture quality far beyond the standard found in most smartphones. Combined with a highly tuned High performance sensor, the Venus Engine uses a combination of noise reduction systems such as Multi Process NR, Random Filter and Aperture Filter to capture colour and detail in a natural and accurate manner



\* As a digital camera with 1-inch sensor, as of 15 September, 2014.

• Leica is a registered trademark of Leica Microsystems IR GmbH. • ELMARIT is registered trademark of Leica Camera AG.  
• Leica DC lenses are manufactured using measurement instruments and quality assurance systems that have been certified by Leica Camera AG based on the company's quality standards.



\* Actual resolution: 3840 x 2160p

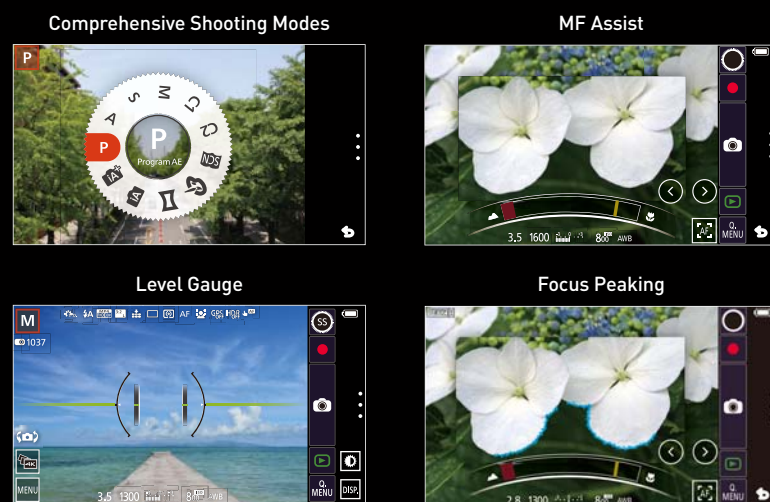
## Full Manual Operation for Expressive Control

### Control Ring with the Operating Feel of a DSLM Lens

The LUMIX CM1 is designed to help you explore and develop your photography. Central is the manual control ring, giving direct access to key functions such as shutter speed, aperture and ISO. Compose your images with the 3D level gauge, histogram, auto focus, manual focus assist and focus peaking.



### Shooting Functions That Enhance the Joy of Taking Pictures



- Exposure Compensation**  
±3EV
- White Balance**  
Auto / Daylight / Cloudy / Shade / Incandescent / White Set / Color Temperature / White Balance Adjustment
- ISO Sensitivity**  
Auto / i.ISO / 125-12800 / Extended ISO 100/25600

### RAW Format: Just Like a Negative

The LUMIX CM1 captures pictures in both JPEG and RAW formats. RAW takes image data directly from the camera sensor, offering you a greater flexibility in terms of editing and post-production.

\* The software to process RAW files on a PC is not bundled with the LUMIX CM1. To do this, SILKYPIX® Developer Studio is available for downloading at Ichikawa Soft Laboratory's website using a PC connected to the Internet.

## 4K Video and 4K Photo for New Image Creation

### 4K Pre-Burst App for Capturing the Perfect Moment

The LUMIX CM1 captures 1.5 seconds of 4K footage before and after pressing the shutter button — taking a total of 45 images for you to scroll through, review and find the exact moment.



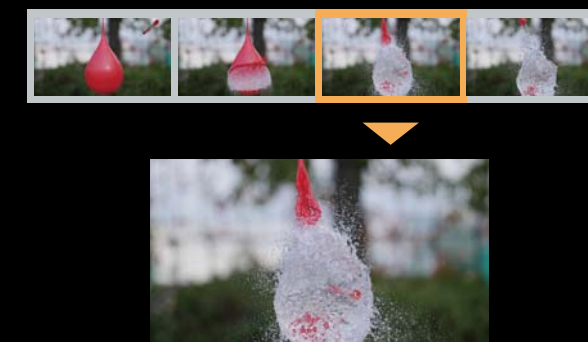
\* Actual resolution: 3840 x 2160p



### Never Miss a Picture with 4K PhotoCapture



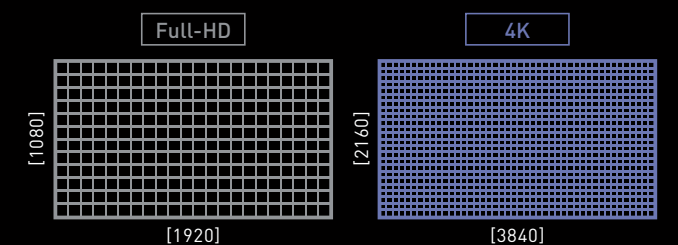
Shoot action scenes using 4K video to find the exact picture that perfectly describes a scene. The LUMIX CM1 lets you review footage, frame by frame, and then extract it as a picture with an A3 print size. Pictures are crisp, with minimal blur — even in low light conditions.



### Enjoy Rich Detail with 4K Video

The LUMIX CM1 records video in Full-HD and even 4K to deliver a more intense viewing experience. The native resolution of 3840 x 2160 pixels is four times greater than Full-HD, resulting in much higher levels of detail than you've ever seen before.

\* When recording videos in 4K, use a microSD Memory Card with SD Speed Class of "Class 10."



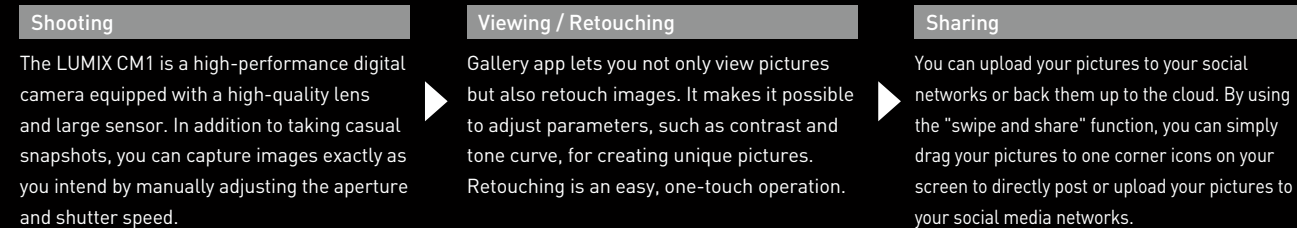


## Sharing Daily Excitement through Photos

### Shooting, Viewing, Retouching and Sharing Pictures Seamlessly

The LUMIX CM1 lets you upload pictures of exciting everyday scenes over the Internet. It provides a new experience of sharing not only information but also emotional excitement through pictures. With the LUMIX CM1, you can easily post pictures on social media and upload them to a cloud for backup. Dragging & dropping an image is all it takes to quickly share or store a picture.

• Requires Wi-Fi® connection or a SIM card for data communication.



### A 4.7-inch, Approx. 6,220k-dot Full-HD Touch Screen

With a high 473ppi resolution, the touch screen displays the subject with exquisite detail and accuracy. It renders beautiful images when shooting and viewing, and makes it easy to confirm details when retouching.



### High-speed LTE Communication Capability

The LUMIX CM1 is equipped with LTE communication capability. When Internet connection is available, photos, RAW format data and videos can be quickly stored online or uploaded to social media for sharing.

• High-speed LTE communication may not be supported in some countries / regions.

### Photo Search App



The Photo Search app uses Google Maps™ and Panoramio data to help you find the best photo opportunities around you.

### Google Drive™ Supported

Google Drive™ is pre-installed so that photos and videos can be automatically uploaded to a cloud for backup. This lets you concentrate on shooting without worrying about the space remaining on the microSD card.

• Requires Internet connection. Note that communication charges will be incurred.

### Android™ 4.4 KitKat®

Pre-installed Android™ 4.4 KitKat® lets you download various apps for Android™ from Google Play™ and use social media and camera / photo apps. The switch on the top panel allows quick changing between Android™ and camera functions.

• Android 5.0™ will be available in May 2015.

### Pashadelic App



The Pashadelic app can be used to share shooting locations and shooting dates and times of pictures with people all over the world for added convenience and fun.

• The Pashadelic app is not available in some countries / regions.

### Other Functions

- Can be used as a smartphone when a SIM card is inserted.
- 2.3-GHz quad-core CPU for high-speed processing.
- Qualcomm® Quick Charge™ 2.0 for fast battery charging.
- Equipped with an app to shoot time-lapse video.

### About SIM Cards

An appropriate SIM card must be inserted in the LUMIX CM1 to use its LTE / 3G communication.

- Insert a SIM card into the LUMIX CM1.
- A SIM card is not required when using only Wi-Fi® communication.
- A SIM card is usually provided when signing a contract with a telecommunications carrier.

The LUMIX CM1 supports microSIM cards.

- If your SIM card is not a microSIM card, one of the following methods must be applied to use the communication function.
  - Follow the necessary procedure to change your SIM card to a microSIM card. (Compatibility varies depending on the telecommunications carrier.)
  - Use a commercially available SIM adaptor to insert your card.

### Use of the LUMIX CM1 as a Smartphone

By inserting a voice call microSIM card, the LUMIX CM1 can be used to make and receive phone calls to and from fixed phones, feature phones and smartphones worldwide.



microSIM Card (3FF)

### Note Regarding SIM Cards

- The microSIM card and microSD card are optional.
- When a voice call or packet communication is performed, charges set by the telecommunications carrier will be incurred.
- For details, contact the telecommunications carrier that issued the SIM card.

### Communication Camera DMC-CM1-S (Silver)



• microSDXC Logo is a trademark of SD-3C, LLC. • The Bluetooth® word mark and logos are registered trademarks owned by Bluetooth SIG, Inc. and any use of such marks by Panasonic Corporation is under licence. Other trademarks and trade names are those of their respective owners. • Leica is a registered trademark of Leica Microsystems IR GmbH. • ELMARIT is registered trademark of Leica Camera AG. • Leica DC lenses are manufactured using measurement instruments and quality assurance systems that have been certified by Leica Camera AG based on the company's quality standards. • The Wi-Fi CERTIFIED™ Logo is a certification mark of Wi-Fi Alliance®. • The Wi-Fi Protected Setup™ Identifier mark is a certification mark of Wi-Fi Alliance®. • "Wi-Fi" is a registered trademark of Wi-Fi Alliance®. • "Wi-Fi Protected Setup™", "WPA™", and "WPA2™" are trademarks of Wi-Fi Alliance®. • The N Mark is a trademark or registered trademark of NFC Forum, Inc. in the United States and in other countries. • Google, Android, Google Play and other marks are trademarks of Google Inc. • Qualcomm® QuickCharge™ 2.0 is a registered trademark of Qualcomm Incorporated. • Other names of systems and products mentioned in this brochure are generally the registered trademarks or trademarks of the manufacturers who developed the system or product concerned. • Weight and dimensions shown are approximate. • Design, functions, and specifications are subject to change without notice. • Some sample images are simulated. • The use of recorded or printed materials that are protected by copyright for any purpose other than personal enjoyment is prohibited, as it would infringe upon the rights of the copyright holder.