



ElitePanaboard Newsletter – October 2011

Welcome to the second elite Panaboard newsletter. For many, this newsletter will unlock a new world of educational resources. We are very proud to announce our new twitter site which should prove to be a great asset to you as an IWB user and educator. So what is twitter? How can you use it? What is its purpose? Can it really help me as a teacher or presenter? These questions will be answered in our twitter for beginner's article. Is the pen mightier than the sword? Well, we believe we have the smoothest and most versatile electronic pen on the market. Find out how to get the most out of your electronic pen on page 2.

Once again, we have included some handy web-based resources which are detailed on page 3, including our explanation of the snipping tool which is the greatest hidden gem in Windows 7[®]. We answer some frequently asked questions about the new Sanyo projector and provide you with a few handy IWB tips along the way. We've received lots of positive feedback from the first issue of this newsletter. Perhaps you are doing something unique at your school that you would like to share. Maybe you have an article to contribute. To get involved, simply reply to this email or let us know at <http://twitter.com/elitepanaboard>

What is Twitter?

Twitter is a place where you can send and receive short 140 character messages. If you are not a twitter user, you probably think of twitter as a place for celebrities to share with their fans how many sugars they put in their morning cappuccino. Yes, there are twitter accounts like that, but twitter is so much more. Most importantly for you, twitter is a place where many educators connect and share ideas about integrating technology effectively in the classroom. Here's how to get started.

Step One: Visit some twitter sites and see some examples of what people are saying. You don't have to sign up. Here are a few examples:

IWB and educational technology tips: <http://www.twitter.com/elitepanaboard>

Breaking news: <http://twitter.com/smh> Funny one liners: <http://twitter.com/ConanOBrien>

Inspiration: <http://twitter.com/tonyrobbins>



Step Two: Create a twitter account. It's free. If you're unsure and want to experiment a little, make up an obscure username. It's very, very easy to deactivate your account and create a new one.

Step Three: Get involved in a conversation. Tweeters use hashtags (#) to create discussions around a particular topic. Let's say you are a fan of the show Survivor. In the "what's happening" box, you might tweet: "Bring back Boston Rob! #survivor". You've now joined the #survivor conversation. Anyone who searches for #survivor will see your tweet. This is a great way to search a particular area of interest.

#edtech and #iwb are great hashtags to search if you are interested in educational technology.

Step Four: Follow someone. If you like what someone has to say, you can follow someone. Every time they tweet, it will appear in your timeline. You can follow just a few people or hundreds. Your choice.

Step Five: Ask a question of someone. Simply include the @ symbol with their username as part of your tweet. eg. "Can I turn off one of the menu tabs on my Panaboard software? @elitepanaboard".

Now What? How about setting up a school twitter account for important announcements. Maybe tweeting "The Athletics Carnival is postponed due to rain" might save your office 50 phone enquiries. Perhaps you could tweet a link to the school newsletter instead of maintaining a database of 500 email addresses.

The elite Panaboard Twitter Account



Just recently we created the @elitepanaboard twitter account. Follow us at www.twitter.com/elitepanaboard. We are tirelessly researching the web so that we can tweet the very best educational web links, articles, links to handouts and newsletters. Every now and again we will conduct surveys through our twitter site. This is also a place where you can ask questions about the elitePanaboard.



Electronic Pen Secrets Revealed



Remote Control Buttons

Okay, so these two buttons aren't exactly secrets. The Remote Control Buttons, (labelled with + and -), are a unique and handy feature of the electronic pen. The Remote Control Buttons correspond with Page Up and Page Down on your keyboard. So... what can you use Page Up and Page Down for? Well, that depends on what application you are using.

- Page Up and Page Down will flick through your slides in your Panasonic software, Microsoft PowerPoint®, Notebook, as well as many other applications.
- Page Up and Page Down will scroll pages in most applications when the page is longer than your screen.

The Remote Control Buttons come in handy for staff and student presentations, enabling the presenter to mingle with their audience. The pen has a range of up to 9m.

The Drawing Menu

Whenever you choose a pen colour using the selector dial, you aren't restricted to the line width or style that you are automatically given. The electronic pen has its own built in menu. To bring up this menu, simply hold down the round menu button on top of the pen and press anywhere on the board. Not only are you given a choice of drawing tools, you can also customise the pen with its own unique marker, line and shape styles.

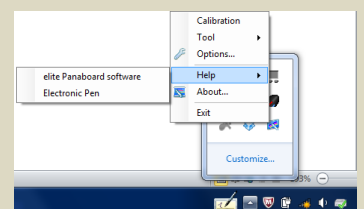
Stylus Mode vs Electronic Pen Mode

If you are running the latest version of our Windows® software (version 4.21 [elite Panaboard 421_000.exe](#)), you might have discovered that there are now two different ways of using our electronic pen. The pen can now be used in "Electronic Pen Mode" or "Stylus Pen Mode". Stylus Mode will disable the selector dial so the pen acts just like your finger, as long as the pen is on. You can select this option by visiting the notification area on your desktop. Clicking on the pen in this area will toggle between Electronic Pen Mode or Stylus Pen Mode.



Quick Tip!

Need Help? Everything you need to know about using your Panaboard software is answered in the elite Panaboard help installed on your computer. To access the help on your PC, simply click on the Panaboard icon in the notification area on your desktop and select "Help".





Six Great IWB Resources

It can be difficult to find quality IWB resources on the internet. Bookmarking websites with “replay value” is a great way to get the most out of the internet. Here are some resources you can use again and again.

Quiz Boxes

Quiz Boxes, created by Stu Hasic (A DEC Regional IT Advisor), is a free application which can be used to create Jeopardy style pre-tests and assessments. There are many quizzes available online and it is easy to create your own. Quiz Boxes is great for engaging large audiences of any age. Download the application for free here: <http://quizboxes.com/>



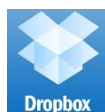
Windows® Snipping Tool

Looking for a quick and easy way of taking screen shots, copying and pasting or saving as a jpeg? The snipping tool, whilst sounding more like a surgical instrument, is a handy accessory which can be found in the accessories folder in Windows® 7. This little nugget is one of the best kept secrets of Windows 7®. Drag the snipping tool down into your taskbar for quick and easy access. Definitely worth checking out.



Dropbox

Sick of sending emails to yourself or saving to your USB stick? Create a free Dropbox account and install Dropbox on your PC, tablet and smartphone. You can then save documents to your Dropbox at home and open up and edit the same document on your devices at work. Documents are saved in “the Cloud”. It works on most networks including NSW DEC. You might need your IT Coordinator’s help to get it going at work. It’s worth the trouble though and many teachers and students are using it with great success. You can also share documents with others. Maybe you could save your newsletter to Dropbox and tweet a link to it. Easier than sending out newsletters by email. How about tweeting a link to this week’s homework contract? No more excuses for losing worksheets! <https://www.dropbox.com/>



Online-Stopwatch.com

This site offers a lot more than its name implies and is bread and butter for every classroom teacher.



The online stopwatch website offers a variety of stopwatches, timers and calculators that can all be used full screen on your Panaboard. The countdown timer is perfect for setting deadlines for your students. You can make it fun using the egg timer or bomb timer. There’s even a metronome which many music teachers find handy. Best of all, each of these choices can be displayed full screen. Visit <http://www.online-stopwatch.com/>

Twiddla

Twiddla www.twiddla.com is a web-based whiteboard website that allows you to collaborate with other users on IWBs, computers, tablets and smartphones. Each time you start a meeting in Twiddla, a unique web address is created that you can share with others. Imagine collaboratively brainstorming an idea on the Panaboard. Share your whiteboard with others around the world, or the classroom next door. Contributors can also live chat! Proxies or firewalls are no problem for Twiddla. It’s amazing.



Just for Fun!



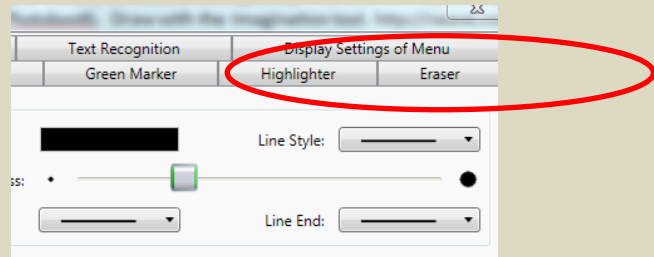
Neave Interactive is a great cause and effect site for Special Ed classrooms. Watch the bouncy balls respond to your voice (You’ll need a microphone). There’s also the webcam toy which is very similar to Apple’s Photobooth. Draw with the imagination tool. Just stay away from the strobe illusion. <http://neave.com/bouncy-balls/>



The Panaboard Function Menu

You have two choices for how you would like to display the Panaboard Function Menu on the side of your IWB. Pattern 1 uses clear, clinical PowerPoint® style icons whereas Pattern 2 has a more colourful approach.

To change your icon display style, click on the menu tab, select the spinner, select the “Display Settings of Menu” tab and select your pattern. Don’t forget to click OK before you exit.



Sanyo Projector FAQ



What is the optimum screen resolution for operating the Panaboard?

Your computer should be running a screen resolution of 1024 X 768 when connected to the Panaboard and Sanyo Projector.

How often do I need to clean the filter?

You don't need to clean the filter on the Sanyo DXL2000 projector. Just replace it after 2000 hours.

I can't see my computer on the screen. What input should I be using? Computer 1 or Computer 2?

To display your computer image, select Computer 1 on your projector remote. Your screen should say Computer 1: RGB. If it indicates Component or SCART, keep pressing Computer 1 until you get RGB.

I can see a picture on my IWB but not on my monitor? Why?

Make sure you have a VGA cable connected from your monitor to the Computer 2 outlet on the wall. Grab your projector remote and select Menu/Setting/Terminal and change the setting to Monitor.

I heard the DXL2000 is capable of projecting in 3D. What do I need to do this?

The DXL2000 Projector is capable of projecting images in 3D. You will need 3D Glasses, 3D software and a 3D capable graphics card in your PC. There are also lots of YouTube videos available in 3D.

Should I turn my projector off when I go out to recess or lunch?

If you are not using your projector for forty minutes or more, turn it off. Anything less than that, the projector is better off being left on. Make sure you turn your projector off at the end of each day.

Panaboard Software

To upgrade to the latest Panaboard software, visit [elite Panaboard 421_000.exe](#) XP Users, please note that you must have installed on your computer prior to installation: Windows® Service Pack 3, Microsoft® Net Framework 3.5, Windows XP® Tablet PC Edition Software Development Kit 1.7 and Windows XP® Tablet PC Edition 2005 Recognizer Pack.

Mac users visit [elite Panaboard UB-T8 Disk.dmg](#).